

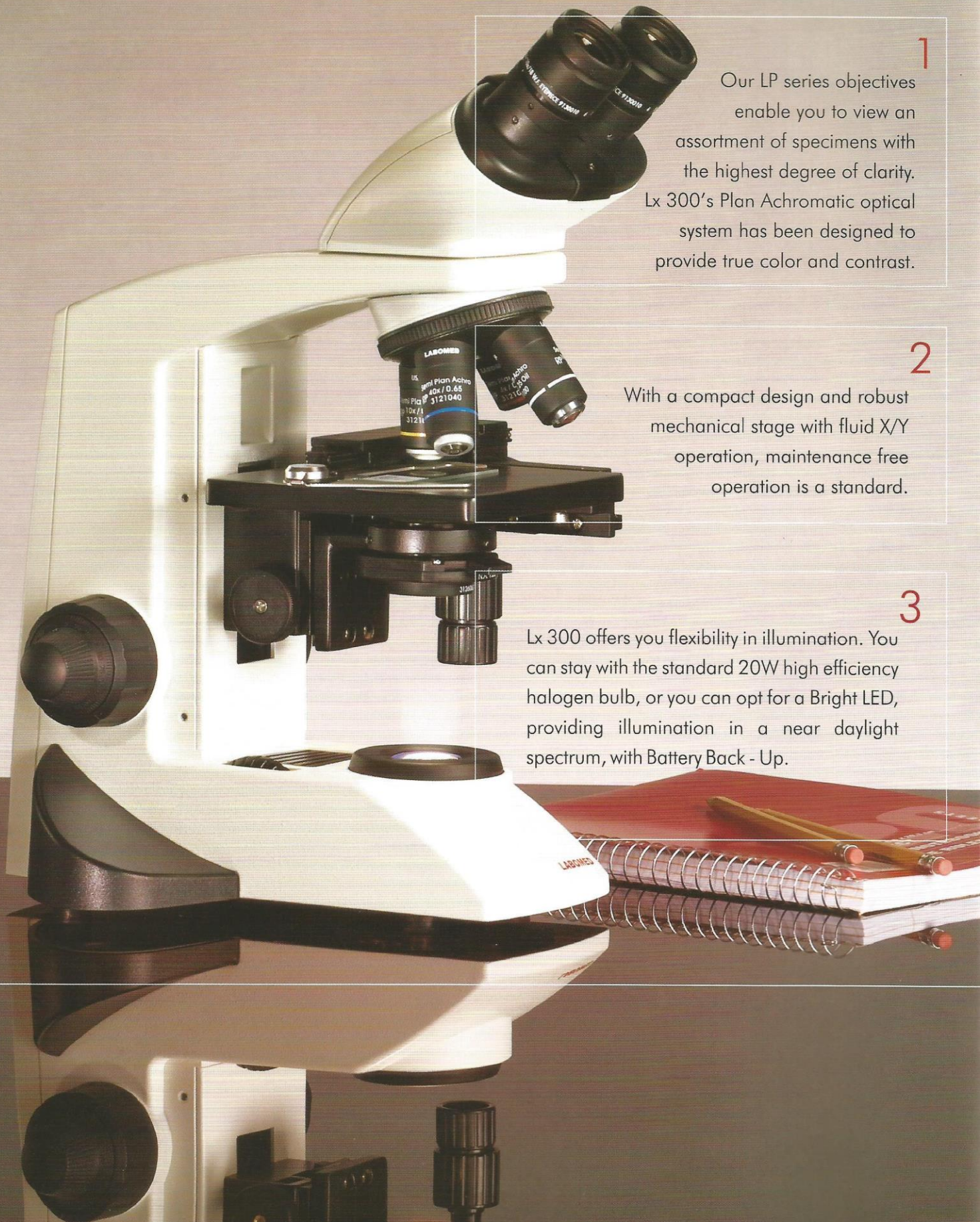
Lx 300



LABOMED 
ideas for vision



Where Style Meets Function



1

Our LP series objectives enable you to view an assortment of specimens with the highest degree of clarity. Lx 300's Plan Achromatic optical system has been designed to provide true color and contrast.

2

With a compact design and robust mechanical stage with fluid X/Y operation, maintenance free operation is a standard.

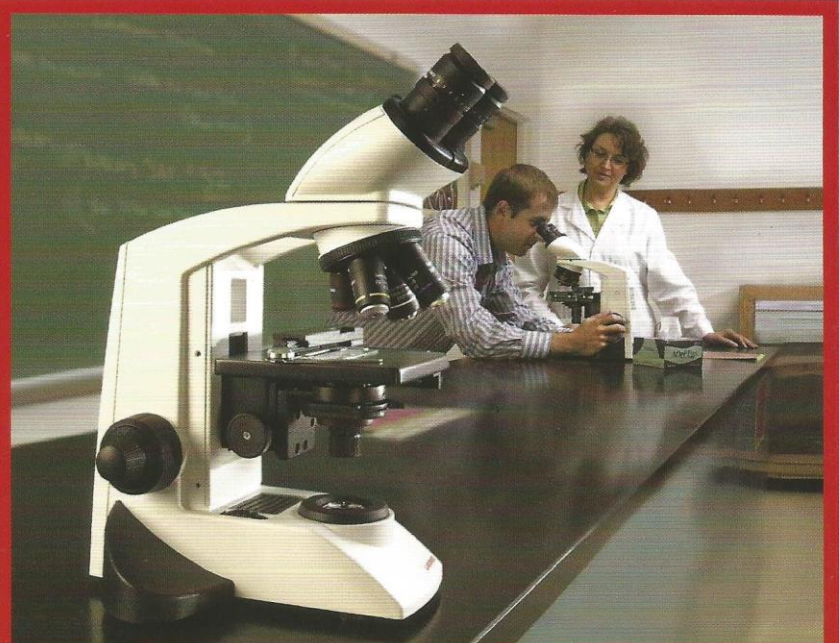
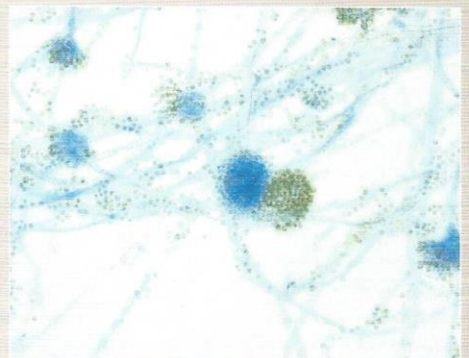
3

Lx 300 offers you flexibility in illumination. You can stay with the standard 20W high efficiency halogen bulb, or you can opt for a Bright LED, providing illumination in a near daylight spectrum, with Battery Back - Up.

Lx 300

Adapted for all types of lab environments, the new Lx 300 reflects a fresh design and delivers a rugged exterior with quality optical and mechanical ingredients for a lifetime of carefree use. This next generation microscope asserts its sophistication not only by design, but also through flawless functionality. In light of the latest in manufacturing technology, the highly modular Lx 300 can offer you a high degree of performance for various applications.

Stand and Base is one piece die casting(Imported) ensures life long stability and enhanced comfort in usage.

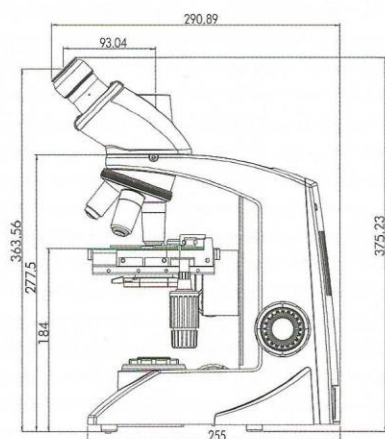
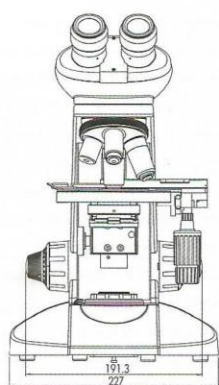


Lx 300 Laboratory Microscope

Specifications

Item	Specifications
- Stand	Single mold sturdy stand with anti rust materials. Extended base for better stability
- Viewing Bodies	45° inclined Binocular or Trinocular Head, 360° rotatable, Inter pupillary distance 54 - 74mm
- Eyepiece	Wide field focusable paired eyepiece 10x/18mm with foldable eye guard, lockable, anti fungus
- Nosepiece	Quadruple Nosepiece (Ball bearing type) with rubber grip
- Objectives	LP series DIN Plan Achromatic objectives 4x, 10x, 40x (spring loaded), 100x (spring loaded, oil), anti fungus
- Mechanical stage	Rectangular stage size 135 x 124mm, X/Y travel range 76mm x 50mm. Low drive movement controls, single specimen holder
- Condenser	Sub stage Abbe condenser NA 1.25 with aspheric lens. Iris diaphragm with snap-in blue filter. Rack and pinion movements on metal guides
- Focusing	Co-axial coarse and fine focusing on ball drive system for highly smooth operation. Fine drive movement 0.3m/rotation
- Illumination	LED [†] or Halogen 6V-20W illumination with variable illumination control. Up to 100,000 hours of LED life and 2,000 hours of Halogen lamp life
- Electricals	Input 220V - 240V AC, CE Approved
- Optional accessories	Phase contrast kit, Polarizing kit, Darkfield kit, Green Filter, Video adapter, Labomed Digital cameras

Dimensions (Units: mm)



Configurations

Description	Configuration
Halogen	
Standard	Binocular
Standard	Trinocular
Standard	Binocular, Phase Contrast
Standard	Trinocular, Phase Contrast
Standard	Trinocular, Digital 3MP camera
LED[‡]	
Standard	Binocular
Standard	Trinocular

Digital model is offered with LABOMED PixelPro archiving software
 ‡ LED version is with rechargeable battery and detachable power cord